



# The Methacton School District Board of School Directors: Enrollment Forecasts



# About FLO & Our Team

---

- Grounded in technical excellence
- Excel at communicating to non-technical audiences
- Dedicated to enhancing communities

# Our Mission and Values

---



- Improve communities
- Collaborate to reach innovative solutions
- Good communication is key
- Flexibility drives function

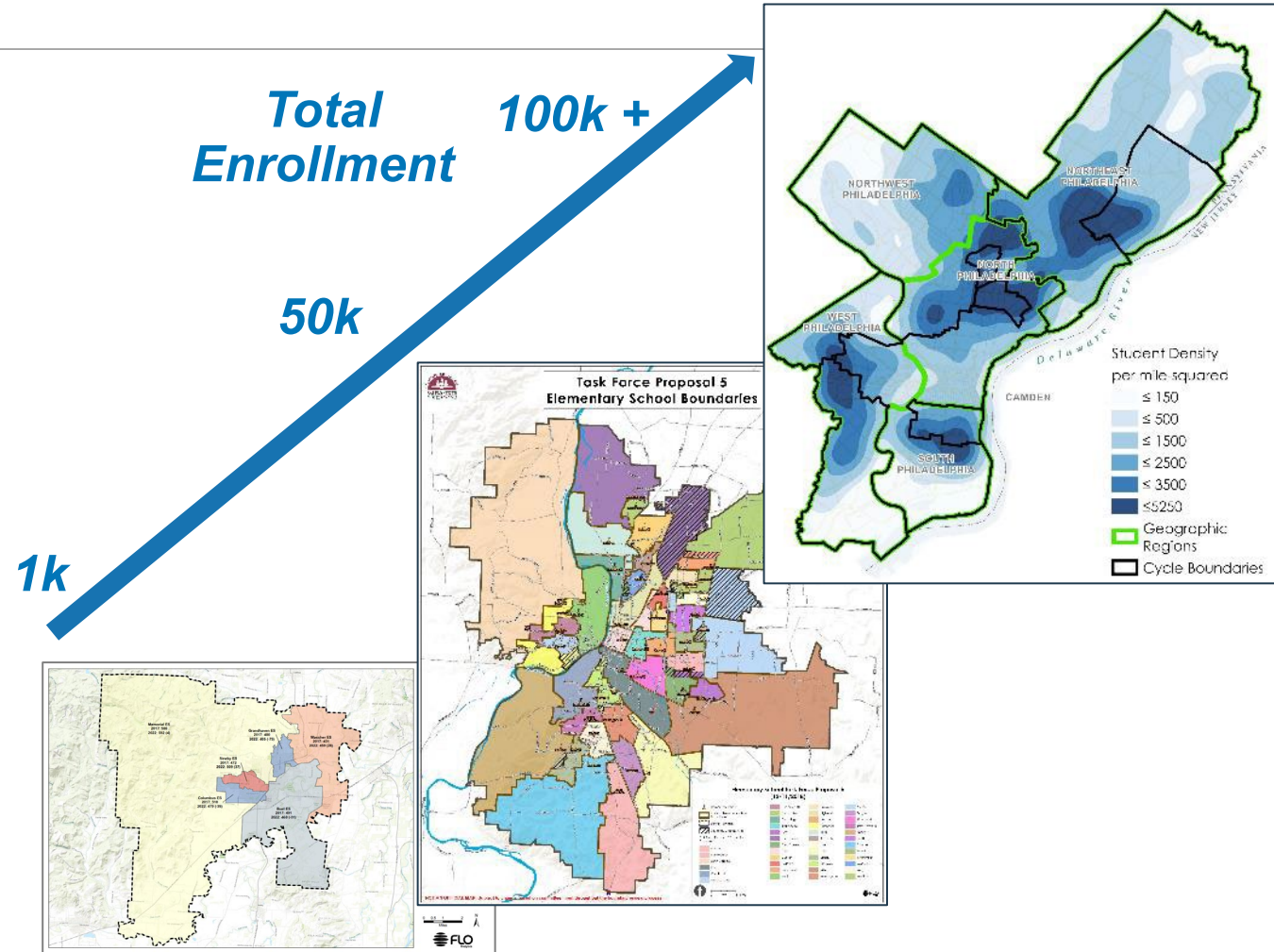
# Why FLO?

## Our Experience

- Hundreds of projects for districts 1,000 to over 100,000 students

### How We Help School Districts

- Enrollment Forecasting
- Demographics and Socioeconomics
- Transportation and Walkability
- Program Optimization
- SPED and PreK Considerations
- Grade Reconfiguration
- Facility Capacities and Utilizations



A group of diverse school children are running away from the camera down a hallway. They are all carrying backpacks and appear to be in a hurry. The hallway has a blue tint, and the children are wearing various casual clothing. The text "Technical Approach" is overlaid in the center of the image.

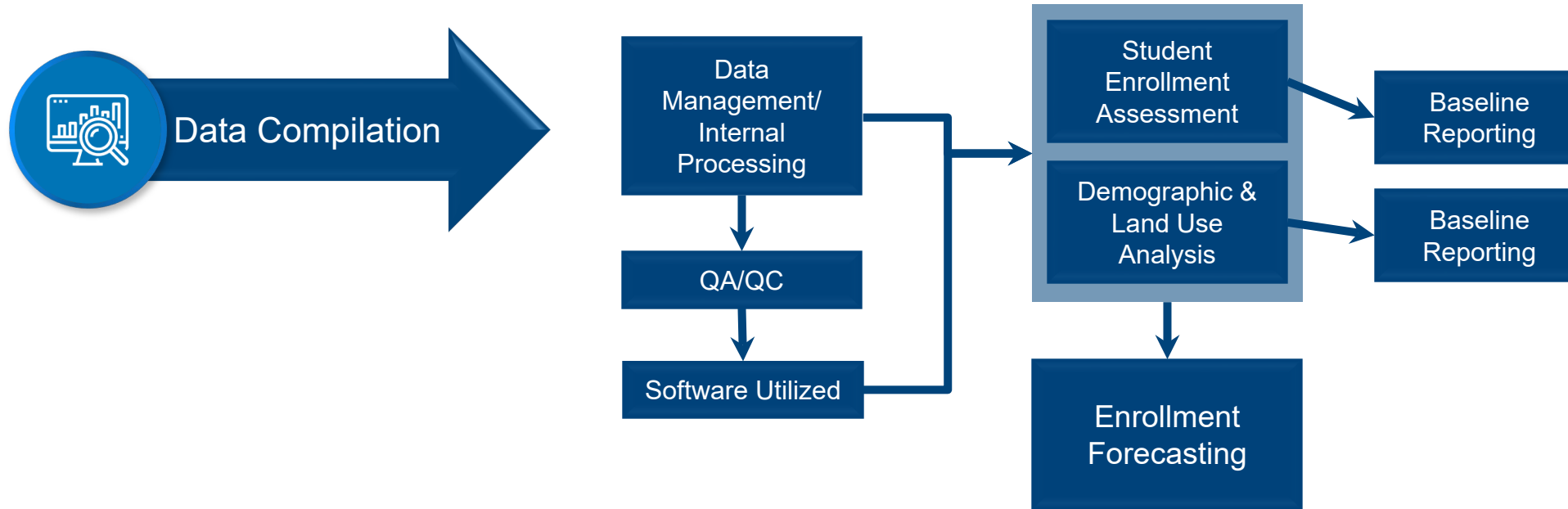
# Technical Approach

# Project Description & Goals

---

- Prepare ten-year student enrollment forecasts for grades K–12 reported annually for the five-year period between the 2022–23 and 2026–27 school years, and a ten-year forecast to 2031–32

# Technical Process



# Data Compilation



Data Compilation

## District

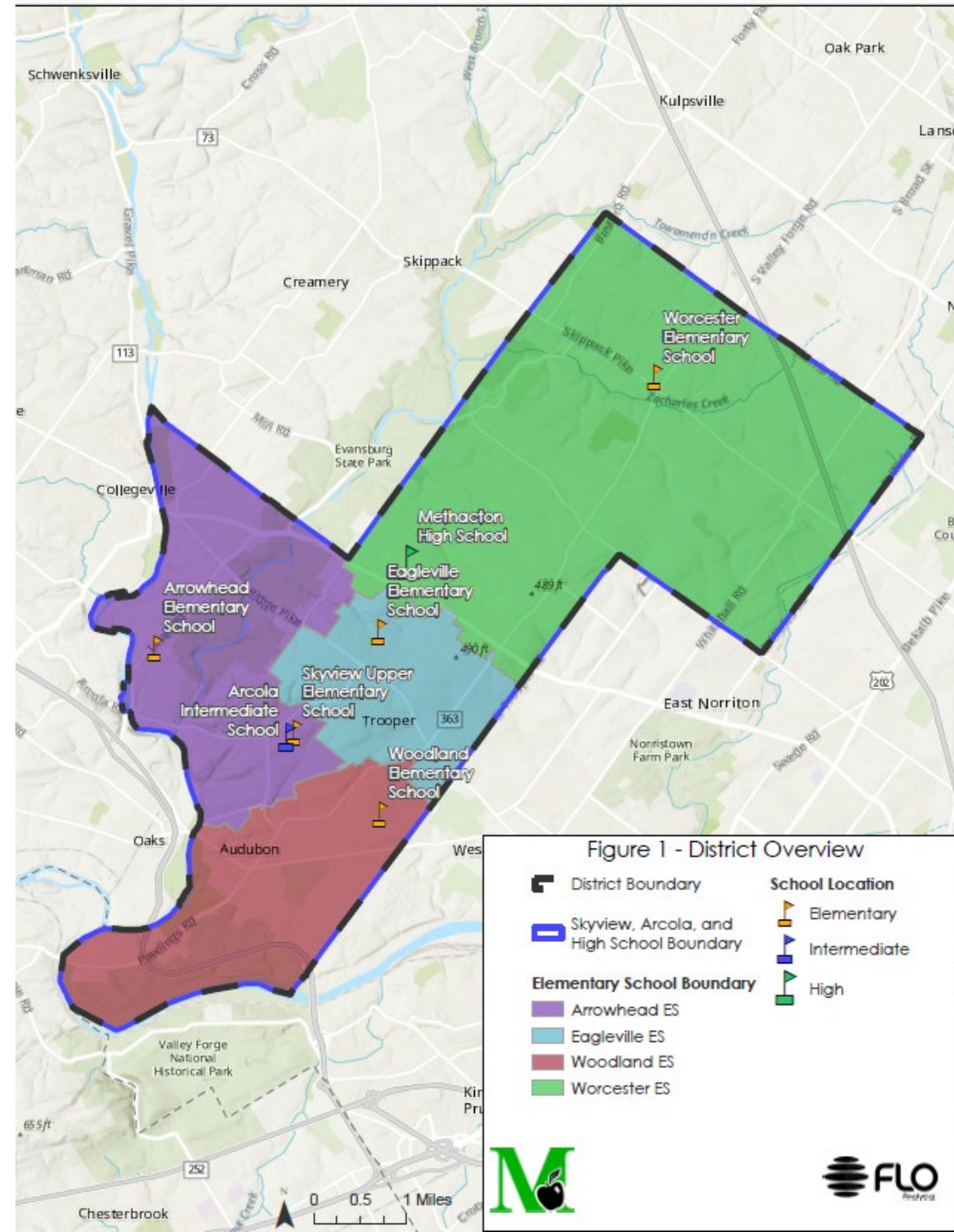
- Student information data
- School catchment boundaries
- Facilities/program information
- Transportation data
- Historical enrollment and program trends
- Enrollment forecasts
- District policies

## Other

- Birth data
- County/Municipal GIS
  - ✓ Parcels
  - ✓ Zoning and Land Use Designations
- Lower Providence Township Planners, Worcester Township, & Montgomery County Planning Commission
  - ✓ Building permits
  - ✓ Interviews
- Supplemental population forecast and demographic data
  - ✓ County, State, ACS, Census

A group of diverse school children, seen from behind, are running down a school hallway. They are carrying backpacks and their hair is in motion, suggesting they are running quickly. The hallway has a blue-tinted background. The text "Enrollment Forecasts" is overlaid in the center in a large, white, sans-serif font.

# Enrollment Forecasts



# Historical Enrollment

## District-Wide Totals

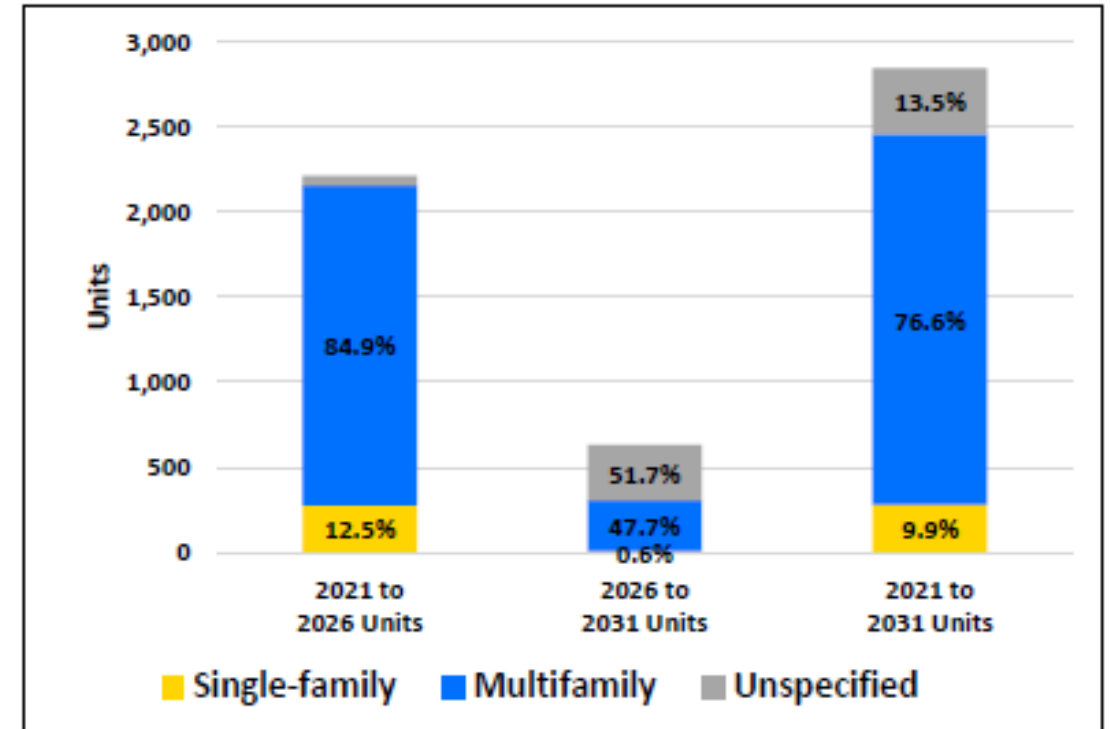
Grade	2016-17	2017-18	2018-19	2019-20	2020-21	2021-22	2016-17 to 2021-22	
K	270	273	280	296	277	276		6
1	326	327	343	341	336	315		-11
2	375	340	334	340	322	338		-37
3	368	371	348	326	334	333		-35
4	377	366	378	353	314	346		-31
5	363	375	385	385	349	308		-55
6	377	367	388	391	383	343		-34
7	433	374	378	388	395	378		-55
8	367	430	378	382	377	393		26
9	362	371	426	370	386	384		22
10	402	359	366	433	361	381		-21
11	411	402	352	368	434	359		-52
12	412	422	408	369	384	444		32
District Total	4,843	4,777	4,764	4,742	4,652	4,598		-245

Methacton School District Enrollment Report October 2016–17 to 2021–22 enrollment by grade. The lowest and highest enrollment values per grade are highlighted blue and orange, respectively. Sparklines are colored blue, gray, or orange to illustrate 5-year decline, stasis, or growth.

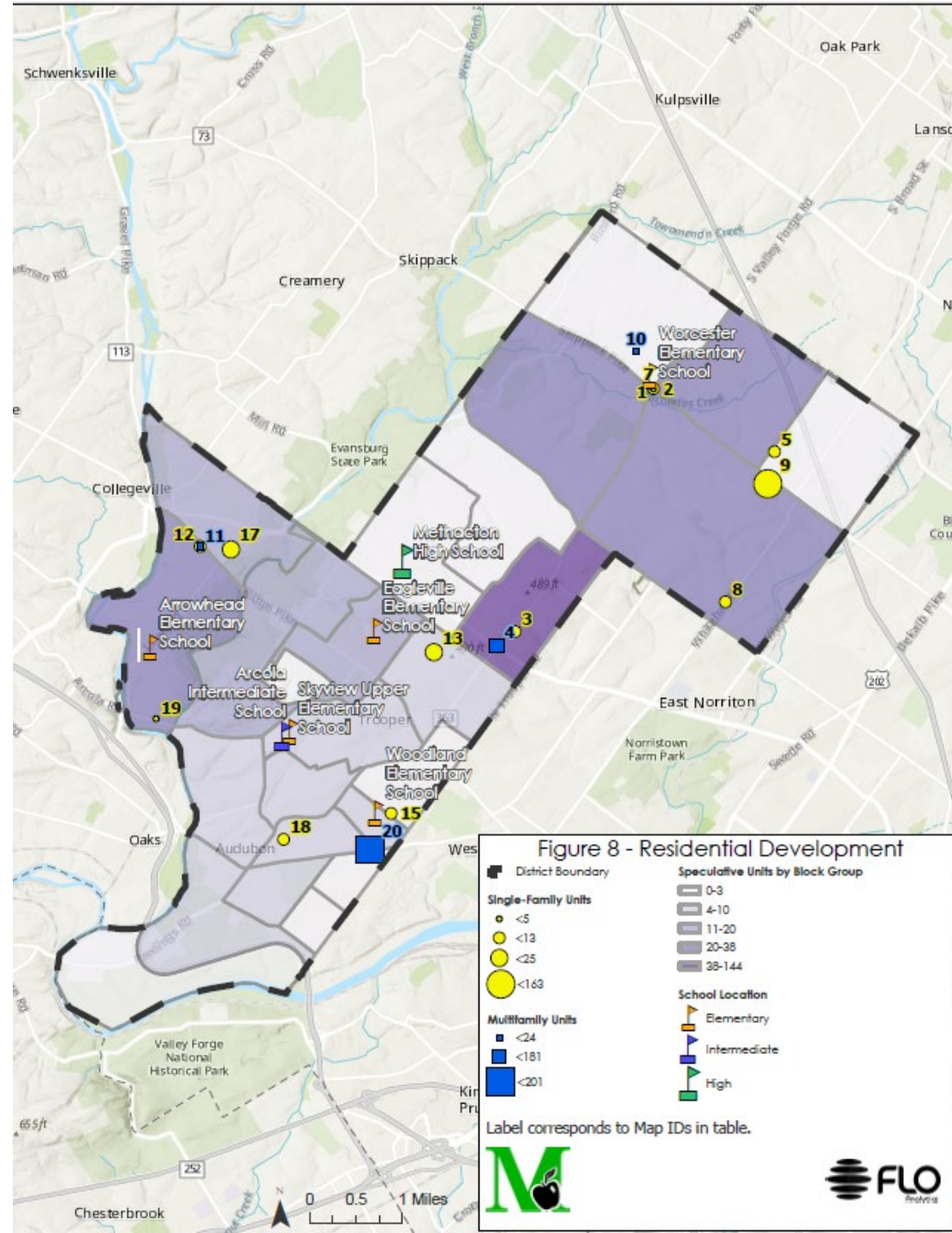
# Land Use & Redistricting Housing Developments

- Interviews with city and county planners
- What type, number, and building horizon of housing developments
- Zoning changes, Community Plan Proposed Updates

Housing Type	2021 to 2026 Units	2026 to 2031 Units	2021 to 2031 Units
Single-family	276	4	280
Multifamily	1,877	300	2,177
Unspecified	59	325	384
Total	2,212	629	2,841



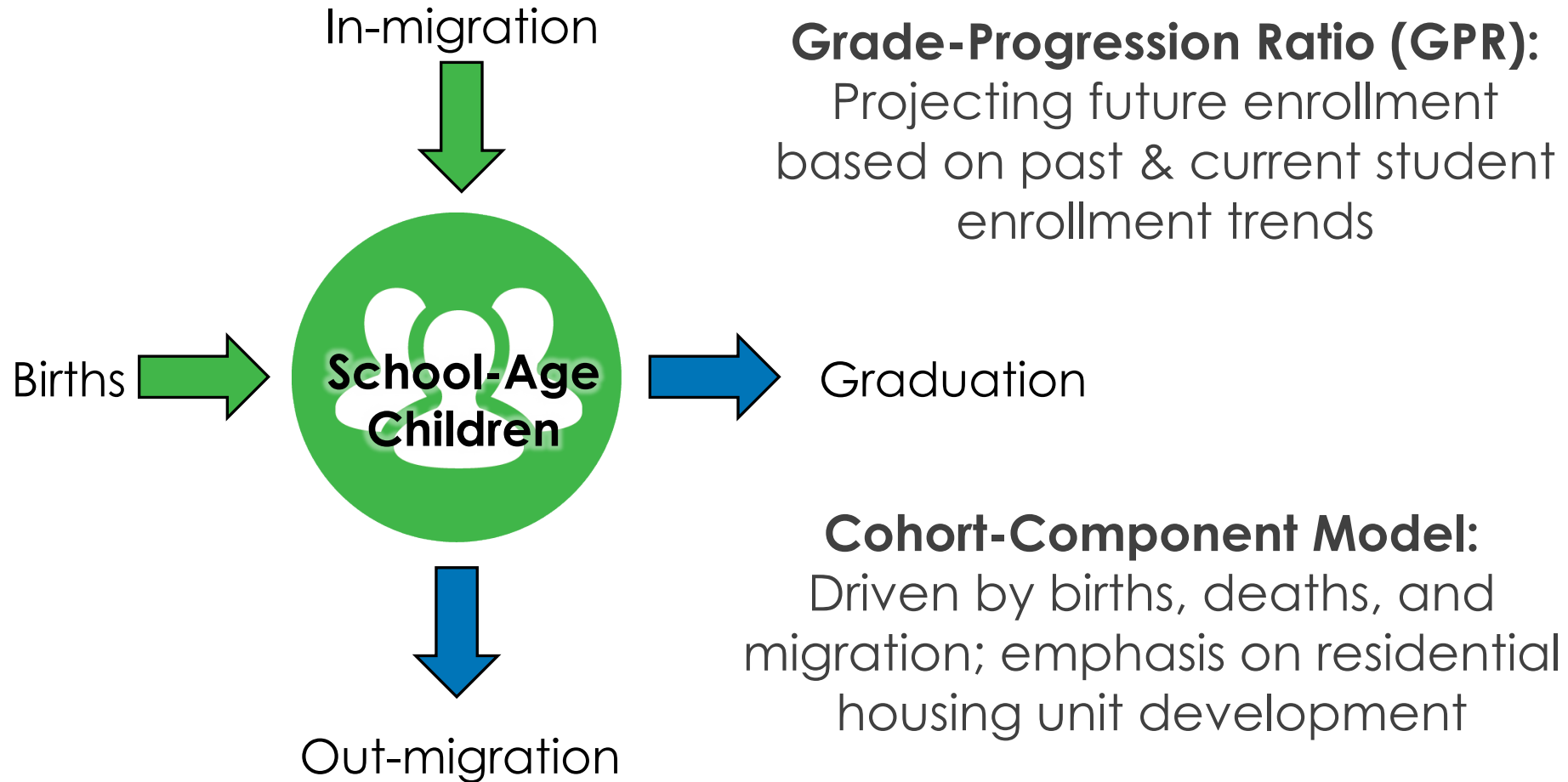
Total number of anticipated housing units by type within the enrollment forecast horizon. Percentages represent each housing type's proportion of the total number of units.



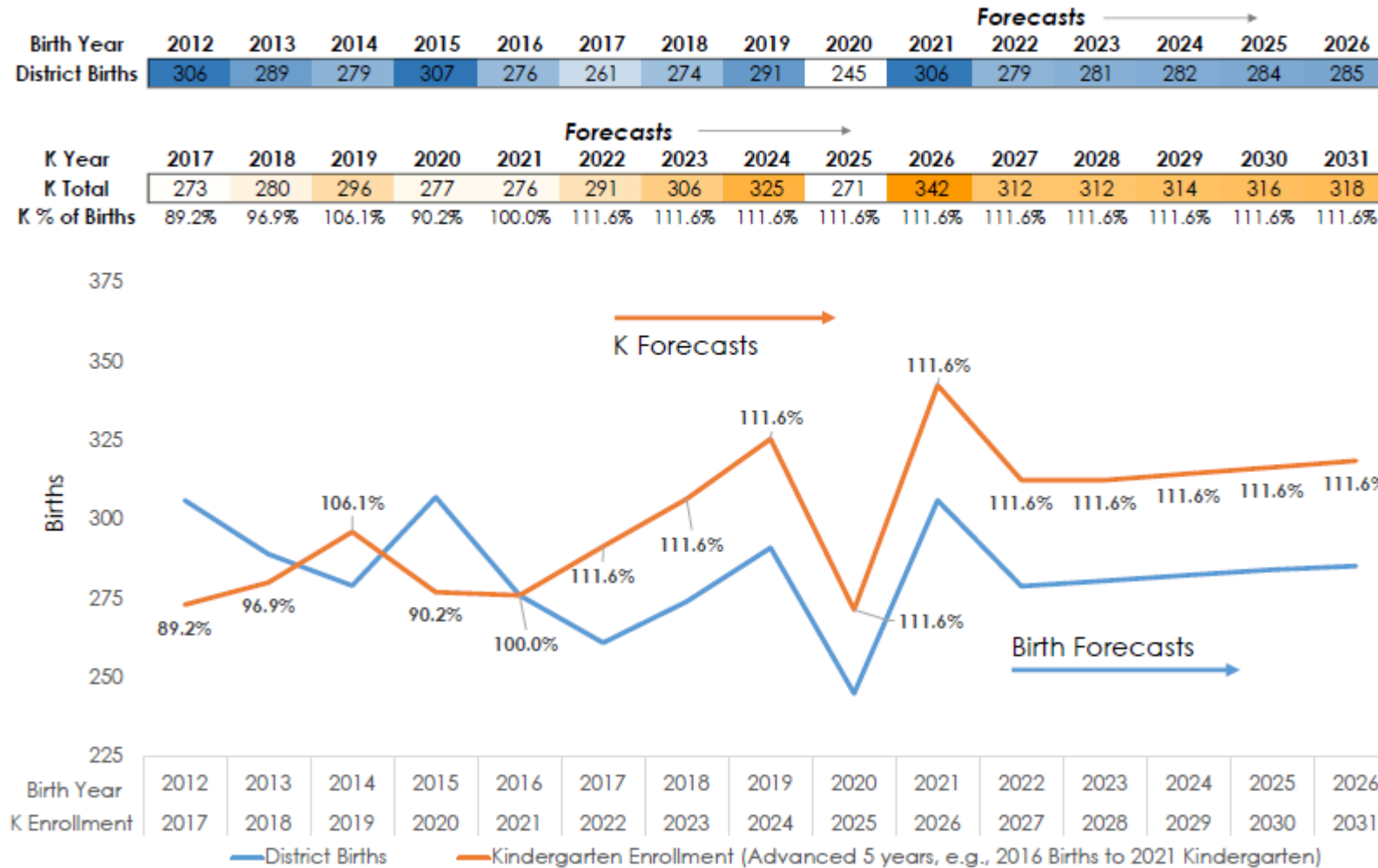
# Student Generation Rates

Summary of Generation Rates Used for New Development	K-12 Students per Single-Family (SF) Unit	K-12 Students per Multifamily (MF) Unit
<b>Overall Average Rates</b>	<b>0.62</b>	<b>0.24</b>
Highest Rate Used for a Development	0.96	0.24
Lowest Rate Used for a Development	0.54	0.24

# Methodology / Models



# District Birth Rates



# Grade Progression Ratios

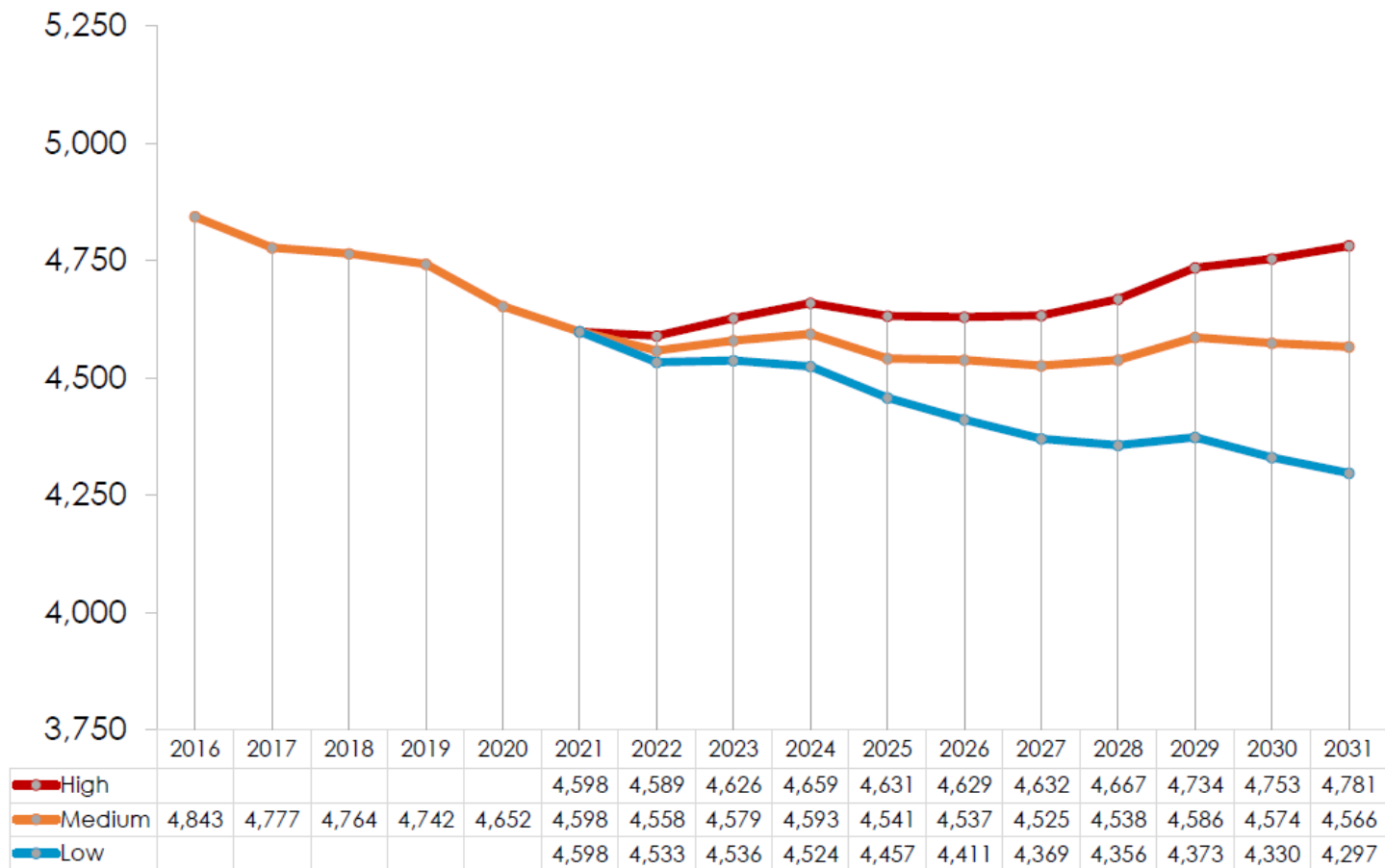
Grade Progression	2017-18	2018-19	2019-20	2020-21	2021-22	3-year Avg	2-year Avg	Forecast GPR
K-1	1.21	1.26	1.22	1.14	1.14	1.16	1.14	1.04
1-2	1.04	1.02	0.99	0.94	1.01	0.98	0.98	1.03
2-3	0.99	1.02	0.98	0.98	1.03	1.00	1.01	1.01
3-4	0.99	1.02	1.01	0.96	1.04	1.00	1.00	1.02
4-5	0.99	1.05	1.02	0.99	0.98	1.00	0.98	1.03
5-6	1.01	1.03	1.02	0.99	0.98	1.00	0.99	1.03
6-7	0.99	1.03	1.00	1.01	0.99	1.00	1.00	1.02
7-8	0.99	1.01	1.01	0.97	0.99	0.99	0.98	1.02
8-9	1.01	0.99	0.98	1.01	1.02	1.00	1.01	1.00
9-10	0.99	0.99	1.02	0.98	0.99	0.99	0.98	1.01
10-11	1.00	0.98	1.01	1.00	0.99	1.00	1.00	1.01
11-12	1.03	1.01	1.05	1.04	1.02	1.04	1.03	1.04

# Student Enrollment Forecasts

---

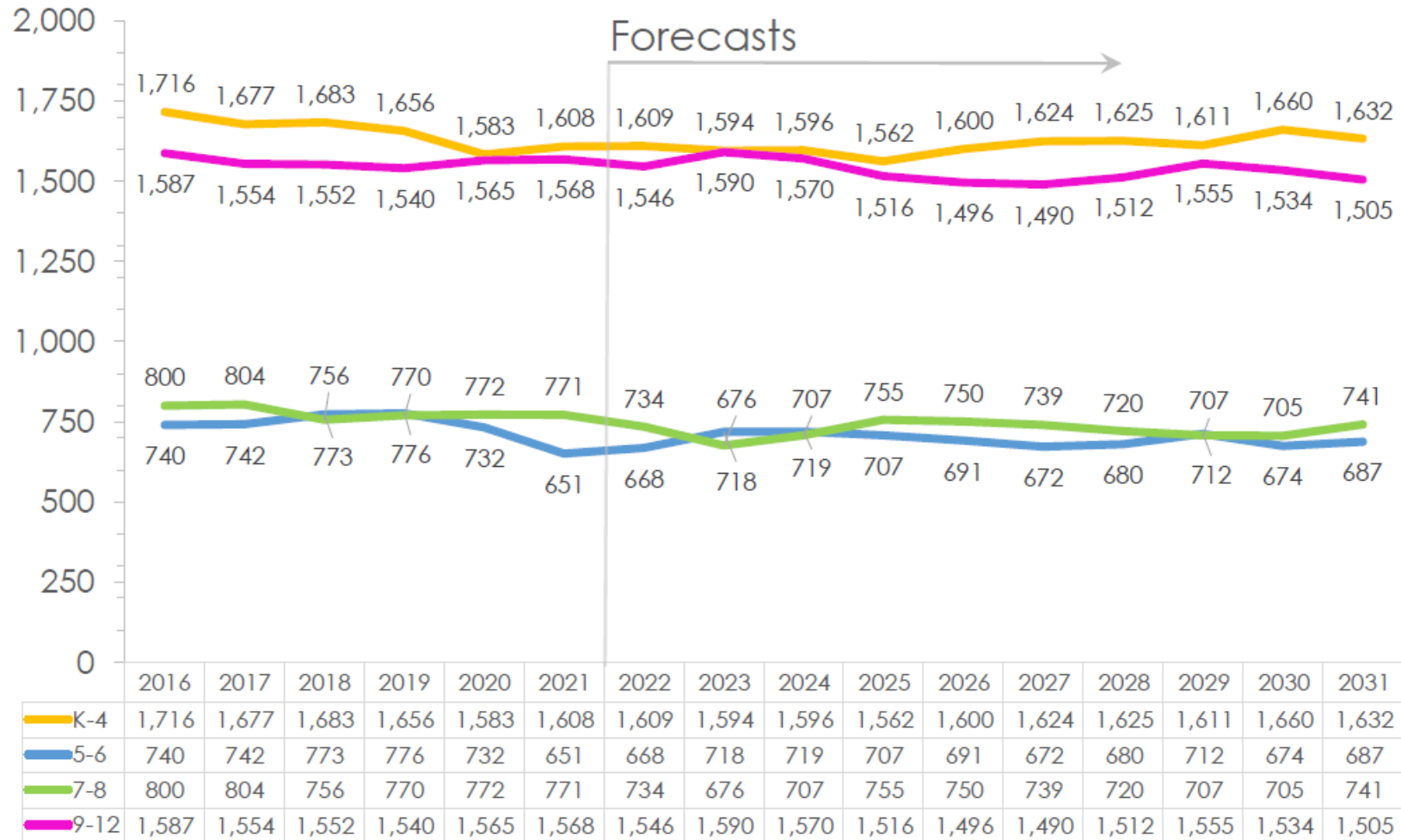
- Forecasted enrollment is generally expected to remain flat over the next 10 years.
- District-wide enrollment is forecasted to decrease from 4,598 in 2021–22 to 4,566 in 2031–32.
- This is primarily driven by:
  - Expectation that the population within MSD will continue to expand at recent rates for the foreseeable future
  - Forecast GPRs that are generally above 1.00
  - Transition to full-day K in 2022–23
  - Large cohorts (born prior to 2009) advancing through and exiting the District
  - Declining births

# District-wide Forecasts



District-wide October 1 building attendance enrollment forecasts (headcount) through 2031–32—low-, medium-, and high-growth scenarios. Includes all schools and students living both inside and outside the District.

# Grade Group Forecasts



District-wide October 1 building attendance enrollment forecasts (headcount) through 2031–32 by grade group, medium-growth scenario. Includes all schools and students living both inside and outside the District.

# Thank you! Questions?

---

